

SONEXclassic

The world's most famous acoustical material.



What is SONEX?

SONEX is a material that's designed to do one thing very, very well—absorb noise. SONEX's microscopic cell structure and surface pattern of deep, alternating wedges combine to create a material optimized for absorbing echoes and reducing noise.



What is SONEX Made From?

SONEXclassic is available in fire-retardant urethane (a durable, soft acoustical foam) or fireproof melamine (a paintable acoustical foam that meets even the strictest fire codes). Both materials are optimized for sound absorption.

Where Can You Use SONEX?

SONEX is used to create perfect audio in recording studios, reduce echoes in conference rooms and gyms, and lower noise levels in workplaces. Restaurants, schools, laboratories—all use SONEX for easier listening and less noise.

Sizes and Colors

SONEXclassic is made in 24" by 48" sheets, which can ship via UPS. Urethane SONEXclassic is available in charcoal and brown. Melamine SONEXclassic is available in white, light gray, and dyed black. Melamine Classic is also available painted with our cleanable HPC (high performance coating).

We make urethane SONEX in three thicknesses, allowing you to choose the best material for your application.

- ▶ Use 2" for most applications, including pro audio and higher-frequency noise sources.
- ▶ Use 3" for mid-frequencies such as music or when wall space is limited.
- ▶ Use 4" for low-frequency noise.

Easy to Install

Just place a few beads of adhesive on the back of each sheet and simply press in place.



Physical Properties (urethane)

Material	Open cell polyester urethane						
Density	2 lbs. per cubic foot						
Flame Spread	<75 (2" and 3" SONEXclassic)						
ASTM E84 Class	2 (2" and 3" SONEXclassic)						
Acoustic Absorption Coefficients							
Freq.	125	250	500	1000	2000	4000	NRC
2"	0.09	0.29	0.64	0.97	1.05	0.97	0.75
3"	0.15	0.42	0.99	1.14	1.10	1.10	0.90
4"	0.19	0.59	1.14	1.16	1.11	1.15	1.00

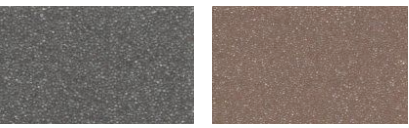
Physical Properties (melamine)

Material	Open cell melamine						
Density	0.7 lbs. per cubic foot						
Flame Spread	<25						
ASTM E84 Class	1						
Color:	Natural white or gray						
Acoustic Absorption Coefficients							
Freq.	125	250	500	1000	2000	4000	NRC
White	0.05	0.31	0.81	1.01	0.99	1.15	0.80
Painted	0.17	0.33	0.85	1.03	1.08	1.06	0.80

Urethane Pricing

2" thick	Sheet size	Sheets in box	Order #
Charcoal or brown urethane	24" by 48"	8 (64 sq.ft.)	UNX-2
		1-9 boxes	\$279
		10-19 boxes	\$261
		Over 20 boxes	\$243
3" thick	Sheet size	Sheets in box	Order #
Charcoal or brown urethane	24" by 48"	6 (48 sq.ft.)	UNX-3
		1-9 boxes	\$275
		10-19 boxes	\$255
		Over 20 boxes	\$238
4" thick	Sheet size	Sheets in box	Order #
Charcoal or brown urethane	24" by 48"	4 (32 sq.ft.)	UNX-4
		1-9 boxes	\$286
		10-19 boxes	\$266
		Over 20 boxes	\$243

Urethane Colors



Melamine Pricing

2" thick	Sheet size	Sheets in	Color
Natural white or light gray melamine	24" by 48"	8 (64 sq.ft.)	Light Gray
			White
		1-9 boxes	\$321
		10-19 boxes	\$310
		Over 20 boxes	\$285
			\$232

Dyed Melamine Pricing

2" thick	Sheet size	Sheets in box	
Deep black	24" by 48"	8 sheets (64 sq.ft.)	
		1-9 boxes	\$314
		10-19 boxes	\$293
		Over 20 boxes	\$283

Unpainted Melamine Colors:



Painted Melamine Colors:

